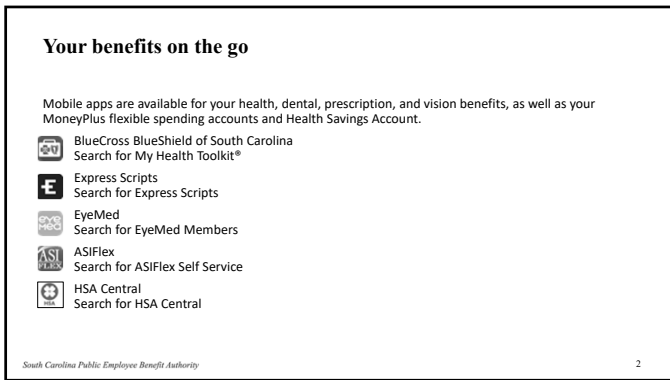
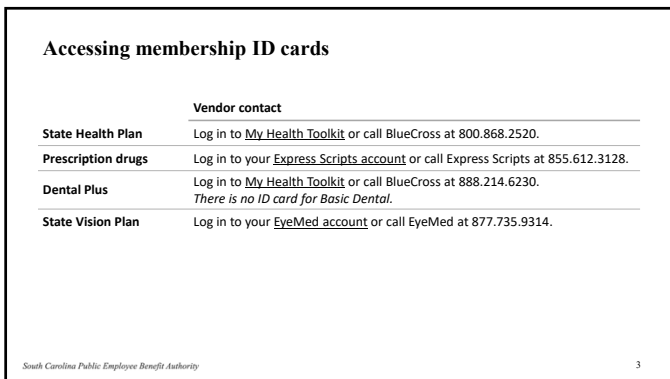




1



2



3

Don't pay more than you should

- Explanation of Benefits (EOB) is a report that shows you:
 - How much your provider charged for services.
 - How much the Plan paid.
 - The amount you will be responsible for, such as your copayment, deductible and coinsurance.
 - The total amount you may owe the provider (does not include any amount you've already paid).
- Find your EOB in the My Health Toolkit app and choose paperless notifications.

South Carolina Public Employee Benefit Authority

4

4

Resources for a better you

Meru Health

For anxiety, stress and depression.

Bend Health

For adolescent mental illness and substance use.

Blue CareOnDemand

For connecting virtually with a therapist, psychologist or psychiatrist.

BlueCross

For health coaching.

Equip Health

For eating disorders.

Within Health

For eating disorders.

Learn more at www.peba.sc.gov/behavioral-health.

South Carolina Public Employee Benefit Authority

5

5

Well visits

Adult well visits

- The State Health Plan covers one well visit every year at no member cost.
- Evidence-based services with an A or B recommendation by the [United States Preventive Services Task Force \(USPSTF\)](#) included.
- Available to all non-Medicare primary adults ages 19 and older.

Well woman visits

- State Health Plan primary members are eligible for one well woman visit each year at no member cost.
 - The benefit is available to all non-Medicare primary female adults ages 19 and older who are covered by the Standard Plan or Savings Plan.
- Well woman exam is in addition to the annual adult well visit.
- Evidence-supported services, based USPSTF A and B recommendations, included.

South Carolina Public Employee Benefit Authority

6

6



- Preventive screening.
- Adult vaccinations.
- Well adult benefits.
- Well child benefits (exams and immunizations).
- Colorectal cancer screening.
- Cervical cancer screening.
- Mammography.

- Behavioral health management.
- Weight management.
- Heart health.
- Diabetes management.
- No-Pay Copay.
- Tobacco cessation.
- Maternity management.

Learn more at www.PEBAPERKS.com.

South Carolina Public Employee Benefit Authority

7

7

Avoid costs by getting the green light for your care

- Some medical and behavioral health services need you or your provider to call for prior authorization for the State Health Plan to provide coverage.
- Prior authorization does not guarantee payment.

South Carolina Public Employee Benefit Authority

8

8

Disclaimer

This presentation does not constitute a comprehensive or binding representation of the employee benefit programs PEBA administers. The terms and conditions of the employee benefit programs PEBA administers are set out in the applicable statutes and plan documents and are subject to change. Benefits administrators and others chosen by your employer to assist you with your participation in these employee benefit programs are not agents or employees of PEBA and are not authorized to bind PEBA or make representations on behalf of PEBA. Please contact PEBA for the most current information. The language used in this presentation does not create any contractual rights or entitlements for any person.

South Carolina Public Employee Benefit Authority

9

9